

ENGINEERING AND STANDARDS DEPARTMENT

693A Spanish Town Road, Kingston 11

Tel 937-9200-9399 Fax 937-9259

T & D MATERIAL SPECIFICATION

JPS Specification #: DAA- H- 2015	Effective Date: January 30, 2015
ITEM STOCK: 02967	Supersedes: All Previous

Description: CROSSARM, ASSEMBLY, H-FRAME, 138 KV, 3 5/8" X 9 1/2" X 32'; (92 mm X 242 mm X 9800 m)

Application: Used for construction of H-Frame on the 138kV Transmission System.

SPECIFICATION

This specification covers the Double Arm Assembly for the H-Frame structure used on the 138kV transmission system.

The Double Arm Assembly shall be supplied fully assembled with cross-arms, mounting bolts and spacers equipped with holes for brace and insulator attachment. Cross-arm dimensions shall be 92mm x 242mm x 9800mm (3 5/8" x 9 1/2" x 32'). The structure shall carry three (3) conductors with a phase to phase spacing of 4724.4mm (15' 6") centre to centre and an equivalent pole to pole spacing of 4724.4mm (15' 6"). Wooden sections shall be manufactured according to ANSI 05.3, REA 1728-701, REA DT-5B, and EEI TD-90 or the latest revisions. Metal fittings shall be manufactured according to the applicable standards of the ASTM. A minimum of Class "C" galvanizing treatment is required for all ferrous products.

See JPS Drawing No. SK6209/2 attached.

The Double Arm Assembly shall preferably be manufactured by Hughes Brothers. Alternatives will be considered only if accompanied with complete and detailed specifications and drawings.

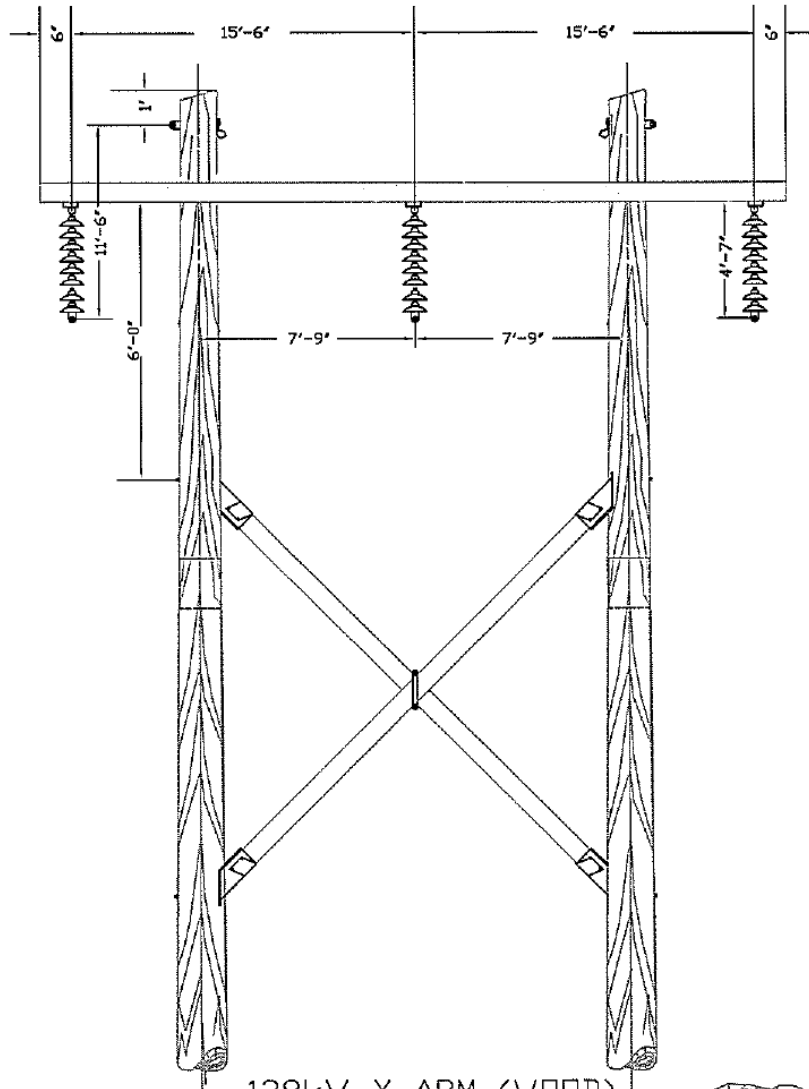
Prepared by: <hr/> Leroy Fisher Transmission & Distribution Engineer Engineering & Construction Department	Approved by: <hr/> Osawaki Wickham, P. E. Manager Engineering & Construction Department
---	--



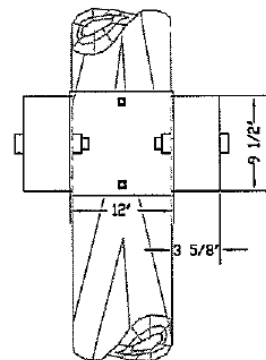
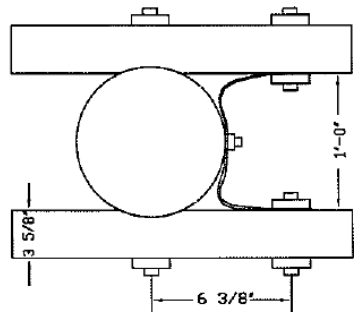
JAMAICA PUBLIC SERVICE COMPANY LTD.

ENGINEERING & SUPPORT SERVICES, 639A SPANISH TWN. ROAD

(DRAWING OFFICE)



138kV X-ARM (WOOD)
3 5/8" x 9 1/2" x 32'



H POLE CONSTRUCTION
WOOD

DATE:	DRAWN BY: C.A.W.	DRAWING No:
SCALE:	DESIGNED BY:	
CHK'D BY:	APPROVED BY:	