



**Jamaica Public Service Company
Limited (JPS)**

Request For Information (RFI) 885167

FOR

THE PROVISION OF WOOD STAVES AND
ACCESSORIES

1	Table of Contents	
2	Scope	4
3	Deliverables and Schedules	4
4	Evaluation Criteria	5
4.1	Technical Merit	5
4.2	Commercial Merit	5
4.3	Evaluation Weighting.....	6
4.4	Selection of Firms	6
5	General Instructions to Firms	6
5.1	General	6
5.2	Submittal Requirement.....	7
5.2.1	Internet RFI Platform	7
5.2.2	File Transfer Protocol (FTP) Site Submittal Procedure	7
5.2.3	Communications	7
5.3	Interpretation of RFI Document.....	8
5.4	Ethical Practices	8
5.5	Eligible RFI Entity	8
5.6	Amendment to RFI Request.....	9
5.7	Cost of RFI.....	9
5.8	Language of RFI Responses.....	9
5.9	Firm’s Experience and Qualifications.....	9
5.10	RFI Entity Financials.....	10
5.11	Corporate Resources.....	10
5.12	RFI Opening	10
5.13	Confidentiality	10
5.14	Clarification of Proposals After Submission	10
5.15	Reservation of Rights	10
5.16	Notification to Shortlisted Firms	11
6	FORM OF SUBMITTAL WOOD STAVES AND ACCESSORIES	12
7	ATTACHMENT A	13

Background

Jamaica Public Service Company Limited (JPS) is an integrated electric utility company engaged in the generation, transmission and distribution of electricity throughout the island of Jamaica. JPS owns and operates 28 generating units and also purchases power from seven Independent Power Producers (IPP). JPS assets include conventional thermal plants (611.5 MW), hydro and wind (32.5 MW), Hybrid Fly-Wheel and Batteries, 50 substations, approximately 1200 km of transmission lines and 20,534 km of distribution lines.

The Upper White River Hydro Power Plant (HPP), originally commissioned 1943, has a rated capacity of 3.1MW. The Lower White River HPP, originally commissioned 1952, has a rated capacity of 4.75MW. These two (2) units are cascaded on the same White River and have a combined rated capacity of 7.85MW. The Rio Bueno HPP facility has a rated capacity of 3.6 MW. These units all use Wood stave pipelines with combined total length of approximately 3.9km, that require sectional replacement.

Objectives

The purpose of this Request for Information (RFI) is to identify suitable firms to supply Wood Staves and supporting accessories for the JPS Hydro facility.

2 Scope

The Wood Staves and accessories will be used for the replacement of sections of Wood stave Pipelines at JPS facilities, namely, Upper White River (UWR), Lower White River (LWR) and Rio Bueno (RB) Hydro Plants.:

The material details for these Wood staves are listed in **Table 1** below:

Table 1: Wood stave Material Details

Item No.	Quantity	UOM	Description
1	55000	FT	WOODSTAVE, RANDOM LENGTH, 3" X 6" - C, CLEAR BC FIR, 72" ID, 43" TO THE CIRCLE.(UPPER WHITE RIVER PIPELINE)
2	8000	EACH	JOINT, KELSEY BUTT MALLEABLE IRON, CS 231 A PATTERN.
3	500	EACH	BAND, PIPE 72" ID, 5/8" DIA, TWO PIECE (TOP & BOTTOM)
4	4000	SET	BAND, PIPE 2 PIECE, 72", 3/4" ID
5	60	SET	CRADLE, TENSION ROD, c/w FOUR MUDSILLS PER CRADLE, CREOSOTE TREATED, TYPE A, ONE BAND GROOVE FOR 72" DIAMETER PIPE.
6	140	SET	CRADLE, STRUT TYPE, c/w FOUR MUDSILLS PER CRADLE, CREOSOTE TREATED, TYPE A, ONE BAND GROOVE, FOR 72" DIAMETER PIPE.
7	1000	EACH	NUT, MILD STEEL, 3/4", 10 TPI, HEAVY DUTY
8	1000	EACH	NUT, MILD STEEL, 5/8", 11 TPI, HEAVY DUTY
9	1000	EACH	WASHER, FLAT, MILD STEEL, SIZE 3/4".
10	1000	EACH	WASHER, FLAT, MILD STEEL, SIZE 5/8".*
11	3000	SET	WOODSTAVE, RAMDOME LENGTH, 2 1/2" X 6", C, CLEAR B.C. FIR 36 TO CIRCLE, FINISHED 2 1/8" THICK, PRESSURE CREOSOTE TREATED, 8LBS SCO. (RIO BUENO PIPELINE)

3 Deliverables and Schedules

JPS will review the initial submissions and select a group of “shortlisted” firms who will be invited to participate in the final submissions. Short-listed firms may also be required to make presentations to JPS.

The Calendar of Activities in **Table 2** below indicates the list of activities to be undertaken by JPS and the prospective consultants in order to meet the established schedule of the RFI.

Table 2: RFI Calendar of Activities

ITEMS	TASKS AND DELIVERABLES	END DATES	RESPONSIBILITY
01	RFI posted on JPS and Carilec websites	July 19, 2021	JPS
02	Respondents submit questions about the RFI	July 22, 2021	Vendor
03	Answers to Questions will be posted on JPS and Carilec websites	July 26, 2021	JPS
04	Respondents indicate intention to participate in RFI	July 22, 2021	Vendor
05	Access given to JPS FTP site	July 28, 2021	JPS
06	Respondents upload response to JPS FTP Site	11:59pm August 9 th 2021	Vendor
07	Private opening of submissions	August 10 th , 2021	JPS
08	Evaluation of submissions	August 10-23, 2021	JPS
09	Shortlisting and notification to respondents	August 25 th 2021	JPS

4 Evaluation Criteria

The Evaluation Team, that is JPS, will evaluate the product specifications submitted by each Respondent. The selection will be based on the Evaluation Team’s judgment of the vendor’s potential to supply quality material for this project. The selection will be based on an evaluation of the submitted information and any additional information provided as a result of follow-up questions that may be posed by the Evaluation Team.

The evaluation criteria will include, but not be limited to, the following and is further detailed in ATTACHMENT A.

4.1 Technical Merit

- Product Specification

4.2 Commercial Merit

- Organizational Details
- Financial Capabilities
- Technical Capabilities
- Qualification

4.3 Evaluation Weighting

The evaluation will be as follows:

Technical – which will include but not be limited to the following components:

- Industry Experience
- Qualifications
- Spares availability

Commercial – which will include but not be limited to the following best and final components:

- Organization details
- Financial capabilities

Compliance (5%) – Vendor conforms with terms stated required in RFI

4.4 Selection of Firms

Selection of the short listed vendors will be based on the evaluation's team assessment and ranking of the proposals received from the shortlisted vendors. Each proposal will be evaluated and ranked giving the indicated weighting to both the commercial and technical aspects of the proposal as well as the development plan. Any proposal not complying with the RFI instructions, and/or the required terms and conditions shall be considered a non-conforming proposal. Non-conforming proposals may be excluded from further consideration.

5 General Instructions to Firms

5.1 General

Vendors' submissions shall be prepared and submitted strictly in accordance with the instructions provided herein. Vendors, whose submissions are not prepared and submitted in accordance with these instructions, may be considered non-compliant and rejected.

Quotations or prices are not to be included in your submission for this RFI.

In all cases, JPS reserves the right to accept or reject submitted responses at its sole discretion without stating any cause or reason, and without any cost or liability or obligation on the part of the JPS. Throughout this RFI Document:

(a) “day” means calendar day.

5.2 Submittal Requirement

The Vendor shall submit their proposals via the designated FTP site, which is JPS Sharefile.

5.2.1 Internet RFI Platform

The Procuring Entity is utilizing a FTP site to facilitate the RFI process.

There are no license costs or usage fees to the vendor for the use of the FTP site.

This will not be a reverse auction; instead this platform will simply provide the means to communicate your proposals to the Procuring Entity.

The website address of the FTP site will be provided to vendors via email. Vendors are to upload files in responding to this RFI. Failure to do so may result in disqualification.

It is the responsibility of the vendor to ensure that their proposal is received by Procuring Entity (that is, uploaded to the FTP platform) by the due date and time. Any proposal received after the stated date and time may be rejected.

5.2.2 File Transfer Protocol (FTP) Site Submittal Procedure

The vendor’s designated contact will be sent an email with detailed instructions on how to access the FTP site, including login credentials. This will provide access to an individual folder in which the proposal package can be uploaded.

5.2.3 Communications

All proposals MUST be uploaded to the FTP website. All responses to this RFI are to be submitted in the English Language.

Observing the deadline to submit questions stated in the RFI calendar (Table 2), firms are invited to submit Technical questions via email as follows:

Email Subject: JPS RFI # 885167 - Wood Staves and Accessories

To: Alexa Brown agbrown@jpsco.com

Copy: Ann-Marie Woodham aaiken@jpsco.com

The Procuring Entity will then post both the technical question(s) and respective response(s) on JPS website, titled “Question and Answer”. This will be completed by the

date stated in RFI Calendar of Activities. The originating entity will remain anonymous but all RFI firms will see all questions and responses.

Any contact made directly with any other employees or board members of the Procuring Entity regarding this RFI is a violation of the terms of the RFI response criteria and may be cause for disqualifying an Entity at the sole discretion of the Procuring Entity.

5.3 Interpretation of RFI Document

The Procuring Entity will be the sole source of information regarding clarifications, interpretations, corrections, supplemental data, or changes to the proposal.

Noting the RFI calendar of activities, firms are requested to carefully examine and understand the RFI document and seek clarifications prior to submission of proposals, if required, to ensure that they have understood the RFI.

5.4 Ethical Practices

JPS requires that firms, (including their respective officers, employees and agents), adhere to the highest ethical standards, and report to the (JPS) all suspected acts of fraud or corruption of which they have knowledge or become aware both during the RFI Process and throughout evaluation or selection process.

5.5 Eligible RFI Entity

An RFI entity may be a natural person, private entity, government-owned entity or any combination of such firms supported by a letter of intent to enter into an agreement or under an existing agreement in the form of a joint venture or association (JVA). In the case of a joint venture or association unless otherwise specified, all partners shall be jointly and severally liable.

The RFI entity, local or overseas should be tax compliant in the country of origin and or incorporation.

An entity, and all parties constituting the firm, may have the nationality of any country.

An Entity shall be deemed to have the nationality of a country if the respondent or Entity is a citizen or is constituted, incorporated, or registered and operates in conformity with the

provisions of the laws of that country. This criterion shall also apply to the determination of the nationality of proposed subcontractors or suppliers for any part of the Contract including related Services.

5.6 Amendment to RFI Request

At any time prior to the deadline for submission, the Procuring Entity (JPS) may amend the RFI by issuing addenda.

Any addendum issued shall be part of the RFI and shall be communicated in writing to all who have obtained the RFI from the Procuring Entity.

To give prospective firms reasonable time in which to take an addendum into account in preparing their submissions, the Procuring Entity may, at its discretion, extend the deadline for the submission of RFI.

5.7 Cost of RFI

The Entity shall bear all costs associated with the preparation and submission of its proposal, and the Procuring Entity (JPS) shall not be responsible or liable for those costs, regardless of the conduct or outcome of the RFI process.

5.8 Language of RFI Responses

The Submissions, as well as all correspondence and documents relating to the submissions exchanged by the RFI Firm and the Procuring Entity, shall be written in the English language. Supporting documents and printed literature that are part of the Submissions may be in another language provided they are accompanied by an accurate translation of the relevant passages in the English language.

5.9 Firm's Experience and Qualifications

The Entity shall provide necessary experience details to establish that it has capacity to successfully supply these spares.

Prospective Firms/Consultants shall demonstrate in their submissions that they meet the required qualifications and experiences and are fully capable of executing this project by demonstrating the following, whilst not limited to:

- The Firm/Consultant shall have a minimum of ten (10) years' experience
- The Firm/Consultant shall have a reputable and reliable supply/supplier of spares to support installation and general maintenance
- The Firm/Consultant's proposal shall include demonstration of qualifications for project execution including, evidence of detailed projects for which consultancy was

appropriated/offered in at least two projects with similar requirement for which consultancy is being sought and have been successfully commissioned in the last ten (10) years.

5.10 RFI Entity Financials

Respondents shall be financially solvent to undertake the Project. This shall be evidenced by submission of complete audited financial statement/Annual Report of the Entity for the last year of operation. If short-listed, the entity will be required to provide the last three (3) consecutive years of audited financial statements/annual report.

5.11 Corporate Resources

Firms shall provide information on the corporate management structure pertinent to the control and management of the Project. General information should also be provided on corporate resources and capabilities required to support this project.

5.12 RFI Opening

The Procuring Entity (JPS) will open submissions privately.

5.13 Confidentiality

Information relating to the evaluation of the responses and recommendation of shortlisted firms shall not be disclosed to firms or any other persons not officially concerned with such process until information is communicated to all firms.

5.14 Clarification of Proposals After Submission

To assist in the examination, evaluation, and comparison of the submissions, and qualification of the firms, the Procuring Entity may, at its discretion, ask any Entity for a clarification of its proposal. Any clarification submitted by a Firm that is not in response to a request by the Procuring Entity shall not be considered. The Procuring Entity's request for clarification and the response shall be in writing.

If an Entity does not provide clarifications of its proposal by the date and time set in the Procuring Entity's request for clarification, its proposal may be rejected.

5.15 Reservation of Rights

In connection with this procurement, JPS reserves to itself all rights (which rights shall be exercisable by JPS in its sole discretion) available to it under applicable Jamaican laws,

including without limitation, the following, with or without cause and with or without notice:

The right to cancel, withdraw, postpone or extend this RFI in whole or in part at any time prior to the execution by JPS of the Contract, without incurring any obligations or liabilities.

The right to issue a new RFI.

5.16 Notification to Shortlisted Firms

JPS shall have the right to select Short-listed Firms or the preferred firms that, in JPS' sole judgment and discretion, has provided a Proposal that is in the best interests of and has the best value to JPS and its customers.

The Procuring Entity shall notify the shortlisted Firms in writing, that its proposal has been accepted.

6 FORM OF SUBMITTAL WOOD STAVES AND ACCESSORIES

Each interested party shall submit responses to JPS with accurate file names/labels. Adobe pdf and Microsoft PowerPoint files are preferred. All responses shall address at a minimum and must include, but not limited to the following areas listed below:

1. Wood Staves and Accessories

- Product specifications.

2. Commercial Information

I. Organization Details

- Company Experience
 - Description of all completed projects and/or activities to include efficiency improvements
 - List of past projects with similar scope/Plant
 - Qualification of related Companies
- Ownership Structure
- Structure and Organization Chart

II. Financial Capabilities

- Last 3 years of Audited Financial Statements (Income Statements and Balance Sheets) of Firm, Parent Company, Partners and/or Consortium Members as applicable

Note to Vendors: No prices/costs are to be submitted in your proposals.

2. 5/8" dia. Pipe-Band set for 72" Internal Diameter Pipe

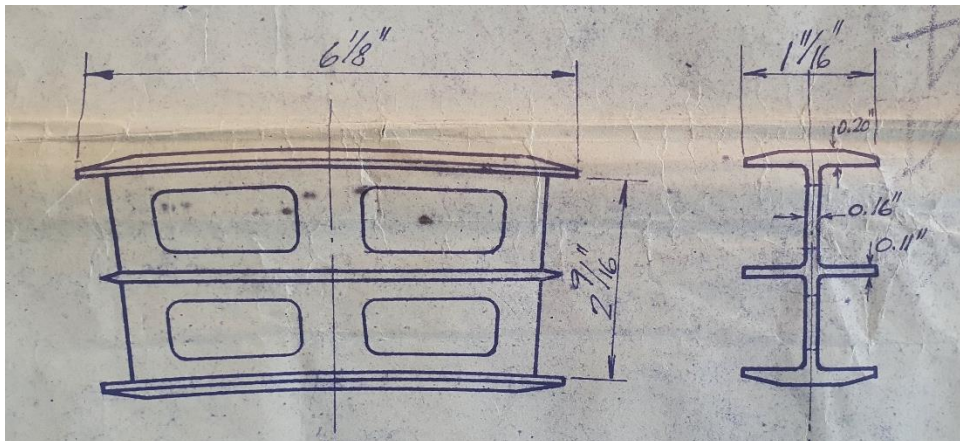
- I. Top band 9'-8" long with button heads on both ends
- II. Bottom band 11'-4" long with 6" rolled thread ends with extra heavy nut and washers. Both band sections bend to conform to 77" outside diameter pipe and Asphalted dipped.

3. 3/4 dia. Pipe-Band set for 72" Internal Diameter Pipe

- I. Top band 9'-8" long with button heads on both ends.
- II. Bottom band 11'-4" long with 6" rolled thread ends with extra heavy nut and washers. Both band sections bend to conform to 77" outside diameter pipe and Asphalted dipped.

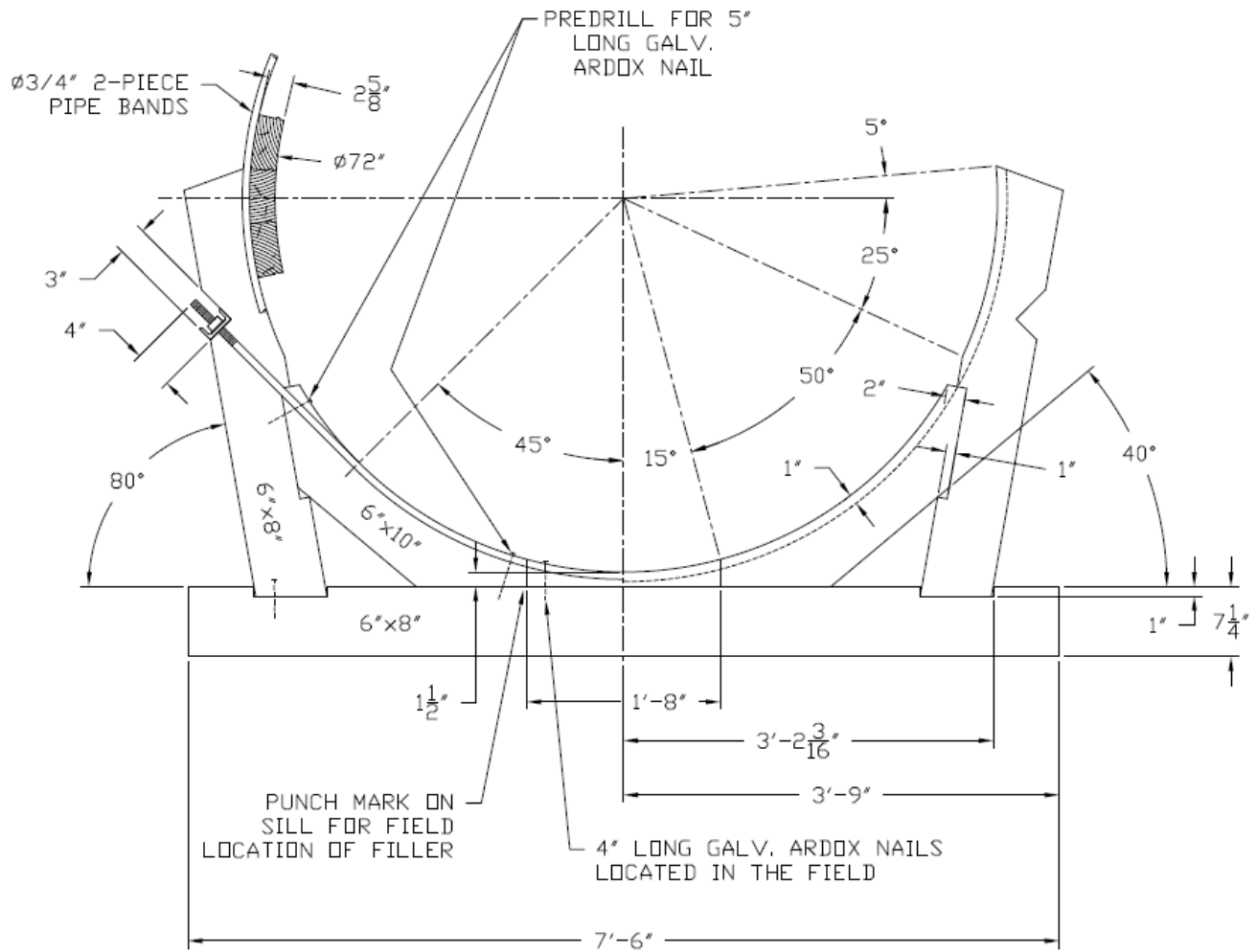
4. Kelsey Butt Joint

- I. Dimension as per drawing below
- II. Material: CS231A ductile iron (malleable iron)
- III. Butt joints must be finished black paint



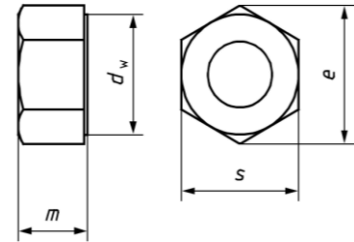
Tension Rod Cradle

- I. Manufactured from clear grade Douglas fir with four mudsills per cradle.
- II. All lumber to be #1 select structural or better grade Douglas fir.
- III. All Lumber to be D2S and incised prior to machining
- IV. Pressure Creosote treated after machining with one band groove, type A for 72" Internal diameter pipe and dimensions as per below drawing.



6. Nut for 3/4" Pipe Band

- I. Material: 4104 Steel Hex Bar and heat treated
- II. Thread – 10 TPI
- III. Dimension – s: 1.50" e: 1.72" , m: 0.80", dw: 1.50"
- IV. Heavy Duty



7. Washer for 3/4" Pipe band

- I. Material – Mild Steel
- II. Dimension – 3/4"

8. Nut for 5/8" Pipe band

- I. Material – 4140 Steel Hex Bar and heat treated
- II. Dimension – s: 1.25" e: 1.43" , m: 0.75", dw: 1.21"
- III. Thread – 11TPI
- IV. Heavy Duty

9. Washer for 5/8" Pipe band

- I. Material – Mild steel
- II. Dimension – 5/8"

10. Wood stave for 60" Internal Diameter Pipe.

- I. Manufactured from Douglas fir 2-1/2" X 6" Clear Grade or better, milled to circular inside and outside faces and to the radial lines of the pipe on the edges. Edges are tongue and grooved and accurately milled to form a watertight seam when staves are assembled.
- II. The staves are to be cut square on the ends and accurately milled to facilitate Kelsey Butt end joints. Staves are kiln dried before milling and incised before creosote treatment for increased preservative penetration.
- III. Staves are to be treated 8lbs. Creosote net retention or rejection per cubic foot of wood. Faces and sides are to be incised to allow for greater penetration of Creosote
- IV. Wood stave pipe have a 60" Internal diameter with 36 Staves to the circle.
- V. Wood staves are to be finished at 2-1/8" thick.
- VI. Stave are to be manufactured in lengths ranging from 18 feet to 10 feet in length

END OF DOCUMENT