



Jamaica Public Service Company Limited

REQUEST FOR PROPOSAL # 872474

CONTRACTOR SERVICES

RENEWABLES HYDRO STATION

UPPER WHITE RIVER HYDRO

**MAJOR OVERHAUL TURBINE, GENERATOR &
CONTROLS UPGRADE**

10th FEBRUARY 2021

1. Table of Contents

2. **Questions and Answers** 3

3. **Drawings** 4

2. Questions and Answers

Question #1: We would be interested in being a subcontractor to perform the shop work associated with the turbine rehabilitation as described in Section 3.1.1 through 3.1.9.

Answer: [At this time, this job has not been awarded. Your company may share the RFP with your preferred/recommended main contractor and submit a combined response by the RFP closing date and time.](#)

Question #2: We are working in the attached proposal and I was wondering if there is any other document that was attached to the project like terms and conditions or any other.

Answer: [The RFP outlines the general contractor engagement. Bidders are expected to outline their terms and conditions for engagement in their proposal.](#)

Question #3” Note that in reviewing the RFP document we were unable to find or view Appendix 16.4 or any of the drawings referenced in the request. We would need access to these drawings to provide meaningful pricing information for the turbine work scope.

Answer: [The drawings are on the following pages for your review](#)

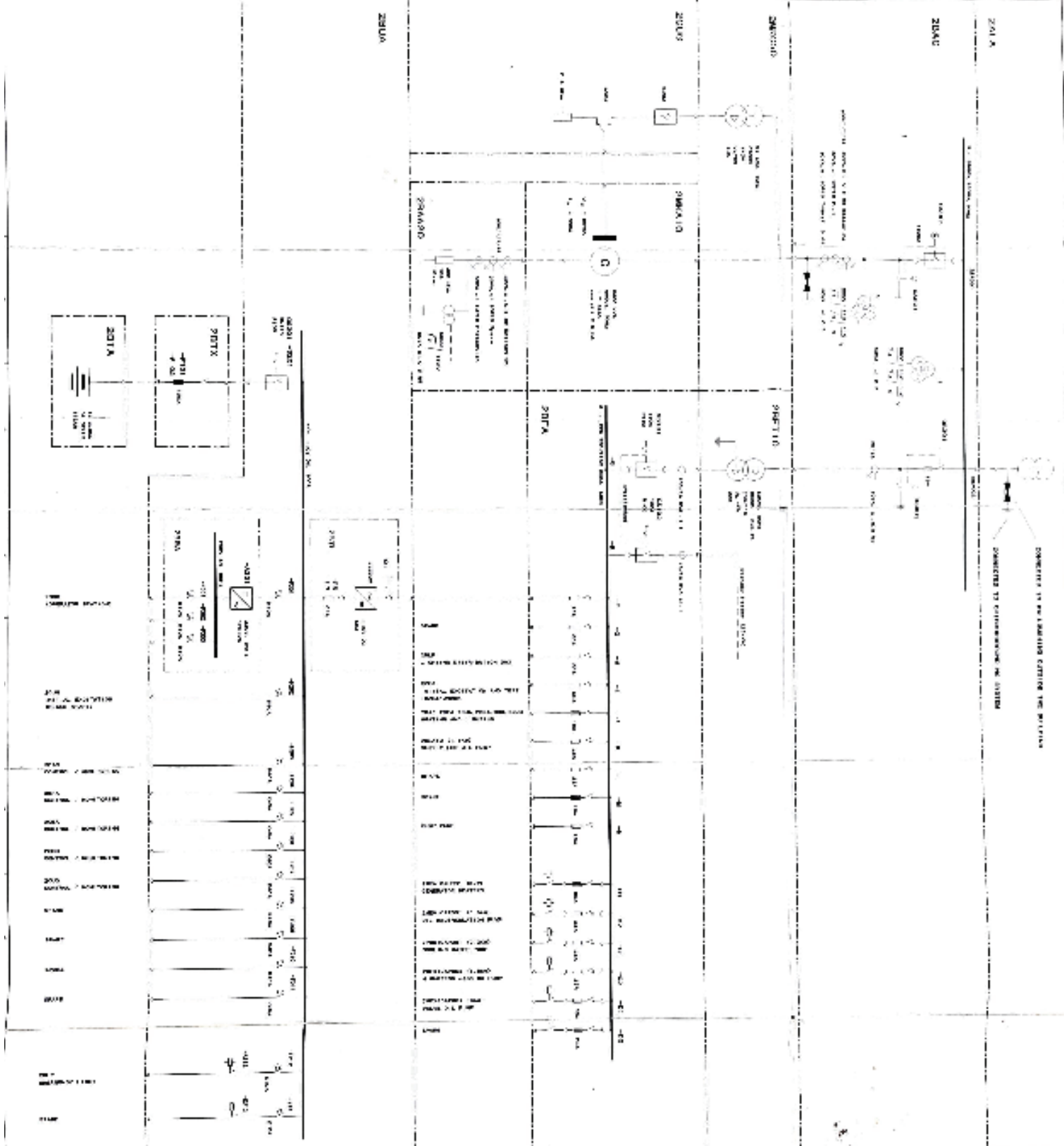
Note to all bidders:

Access to the JPS Sharefile FTP site will be given to prospective bidders after they indicate their intention to bid. An email must be sent to the RFP Points of Contact with your confirmation to participate.

3. Drawings

The following list of drawings are attached for reference:

Item	Description	Drawing #
1	Plant Layout Diagram	GKWH443815
2	Plant Single Line Diagram	GKWH421015
3	Excitation System Main Single Line	GME6479001
4	Turbine General Arrangement	5225
5	Turbine Section	SO911000012
6	Intake Structure, Gates & Hoists	JP2226
7	Head cover, main shaft bearing & seal ring	5332
8	Generator Upper Guide Bearing	554904
9	Generator Lower Guide Bearing	578309
10	Thrust Bearing	578269



Plant Single Line Diagram
 JPS Drawing # GKWH421015

ABB
 MAIN SWITCH - LINE DIAGRAM
 (SHEET 1442)

NO.	DESCRIPTION	DATE	BY	CHKD.
1	ISSUED FOR DESIGN	1988	J. J.	J. J.
2	FOR CONSTRUCTION	1988	J. J.	J. J.
3	FOR OPERATION	1988	J. J.	J. J.

JAMAICA PUBLIC SERVICE COMPANY LTD (JPSCO)
 REGULATIONS OF A SMALL HYDROPOWER PLANT

L. A. BROWN, INTERNAL AND CHIEF ENGINEER
 D. D. VIELLE, SCHEMATIC

JAMAICA PUBLIC SERVICE COMPANY LTD (JPSCO)
 KINOSTON, JAMAICA

ADD: BENTONVILLE AC NARRHIVE IN GERMANY 3 PHASE

NO.	DESCRIPTION	DATE	BY	CHKD.
1	ISSUED FOR DESIGN	1988	J. J.	J. J.
2	FOR CONSTRUCTION	1988	J. J.	J. J.
3	FOR OPERATION	1988	J. J.	J. J.



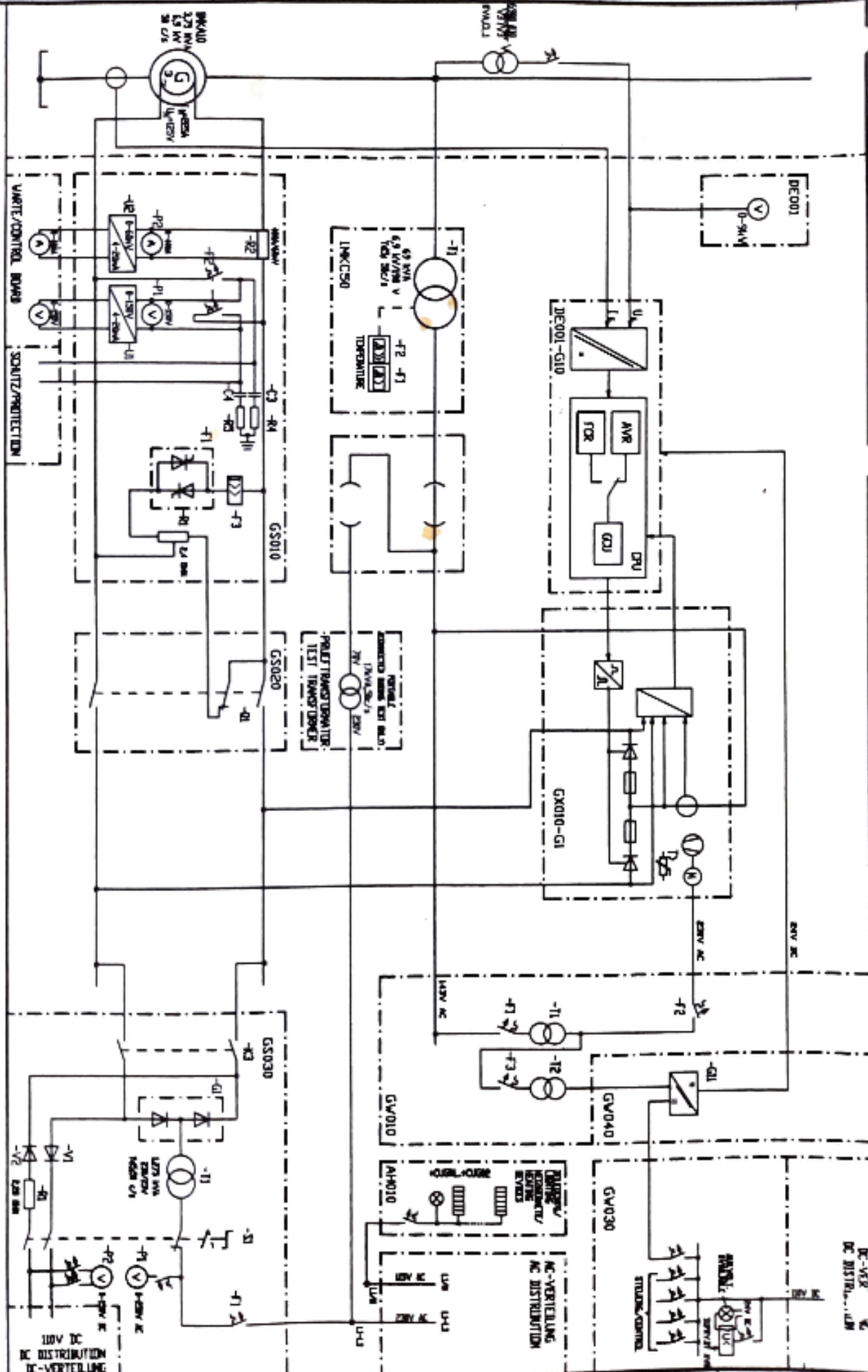
Excitation System Main Single Line
JPS Drawing # GME6479001

The design engineer and the user accept full responsibility for the design of the system. The user is responsible for the design of the system. The user is responsible for the design of the system.

All reserve of rights in this document and in the information contained therein, representations, and or drawings to be used for other than the purpose for which they were prepared is strictly forbidden.

ABB ALSTON POWER

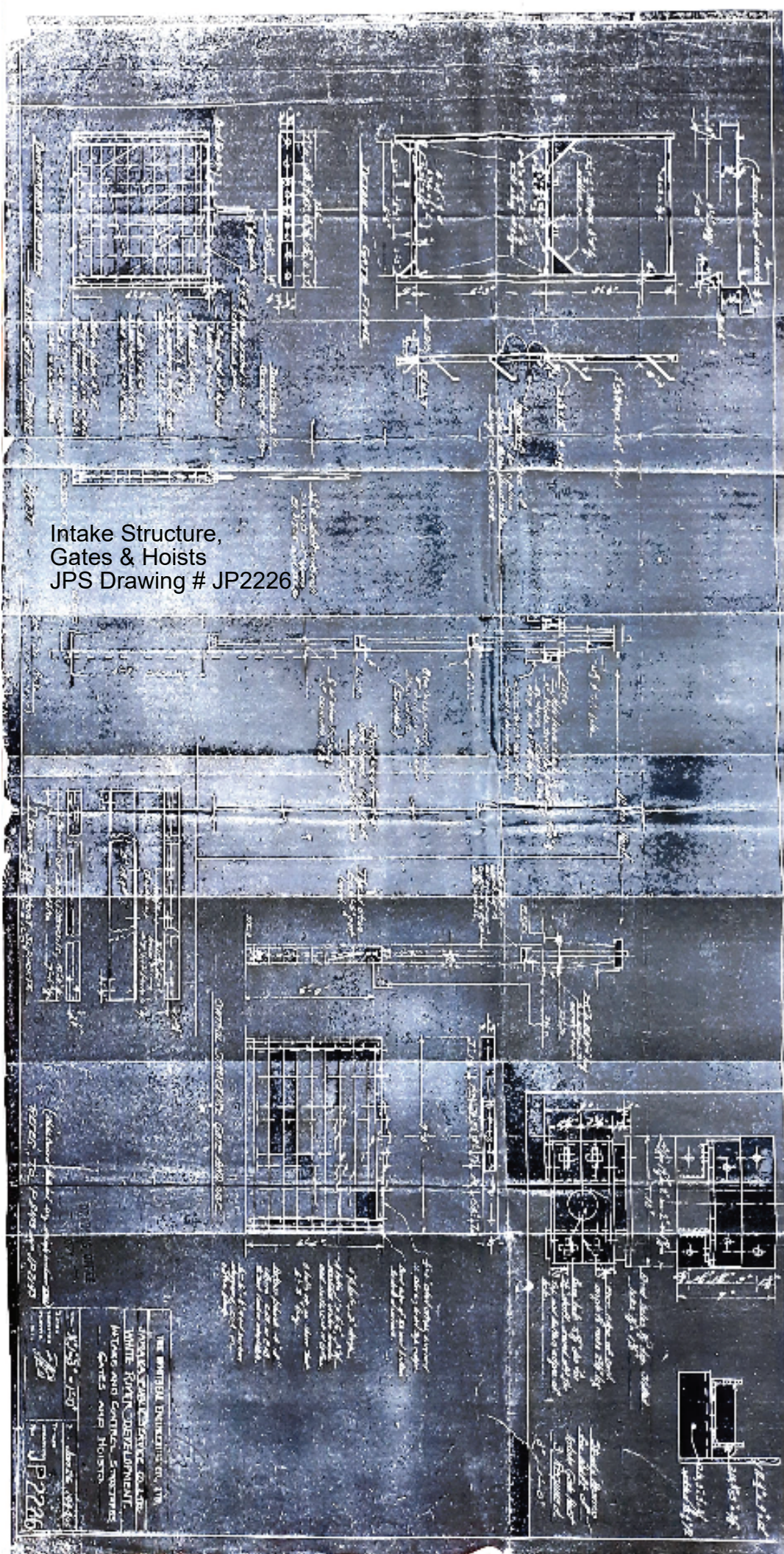
ABB ALSTON POWER



1	2000-03-27	VA	JANATICA PUBLIC SERVICE COMPANY, LTD (JPSCO)	ABB ALSTON POWER	Part. No. 0123	ERRÖGUNGSGEINRICHTUNG ÜBERSICHTSSCHAUBILD EXCITATION EQUIPMENT SINGLE LINE DIAGRAM	1
2	2000-03-28	HN	KINGSTON - JANATICA				2
3							3
4							4
5							5
6							6
7							7
8							8

GME6 479 001

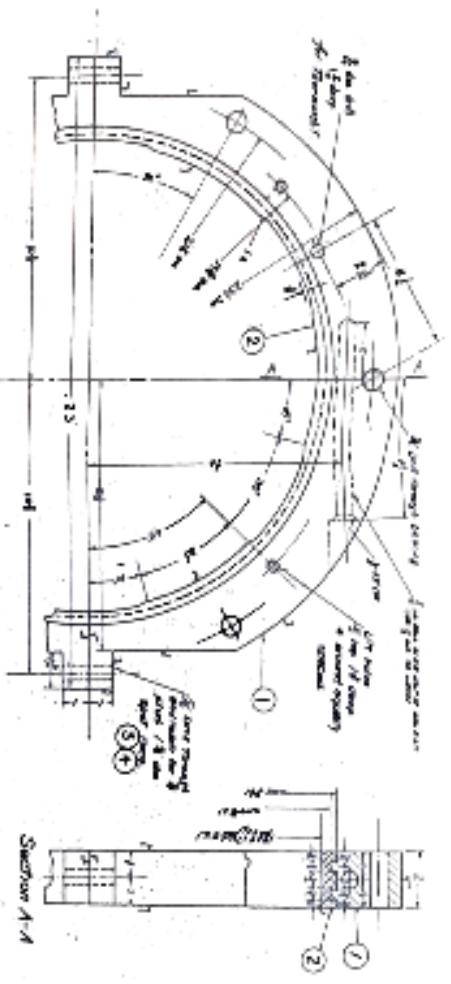
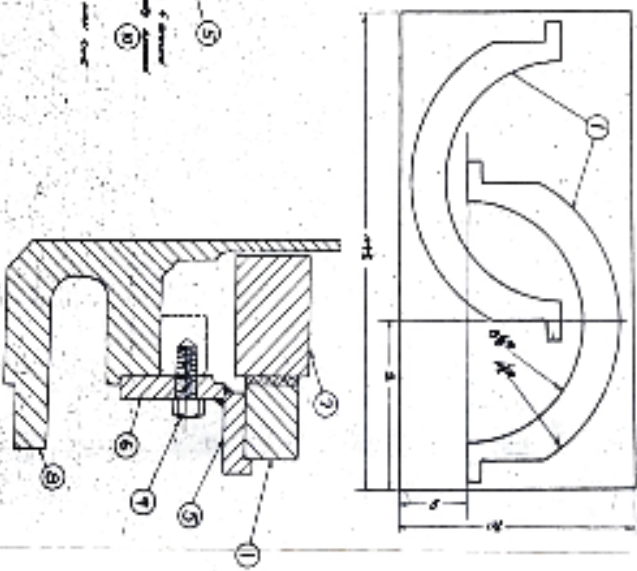
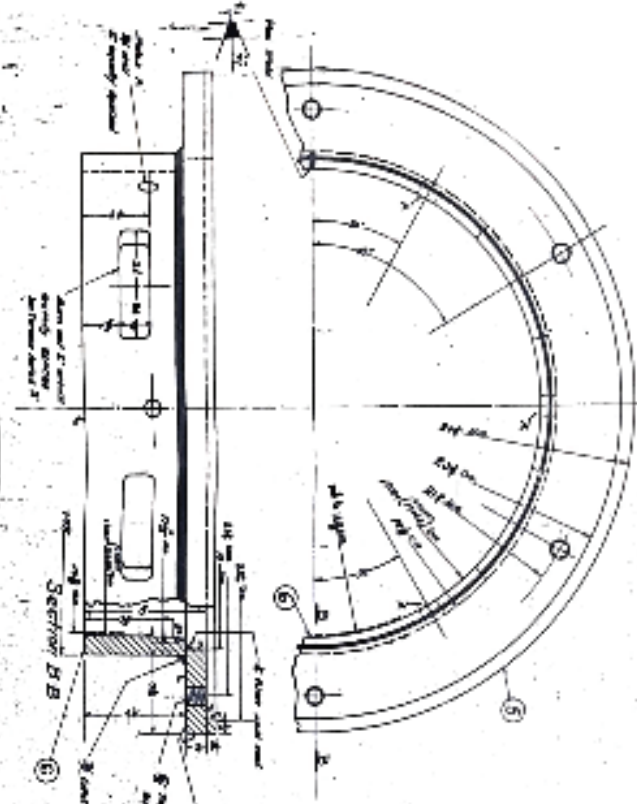
Intake Structure,
Gates & Hoists
JPS Drawing # JP2226



THE UNITED ENGINEERS CO., INC.
ANALYSIS SERVICE BLDG.
WHITE IRON DEVELOPMENT
GATES AND GATES, STRUCTURES
GATES AND HOISTS

JP2226

1. The drawing is for the upper guide bearing of the generator. It is a semi-circular part which fits over the upper part of the generator pole. It is made of cast iron and is hardened to a Rockwell C 45-50. It is finished to a surface finish of 32 RMS. It is shown in the drawing with a 1/4 inch allowance on all surfaces. It is shown in the drawing with a 1/4 inch allowance on all surfaces. It is shown in the drawing with a 1/4 inch allowance on all surfaces.



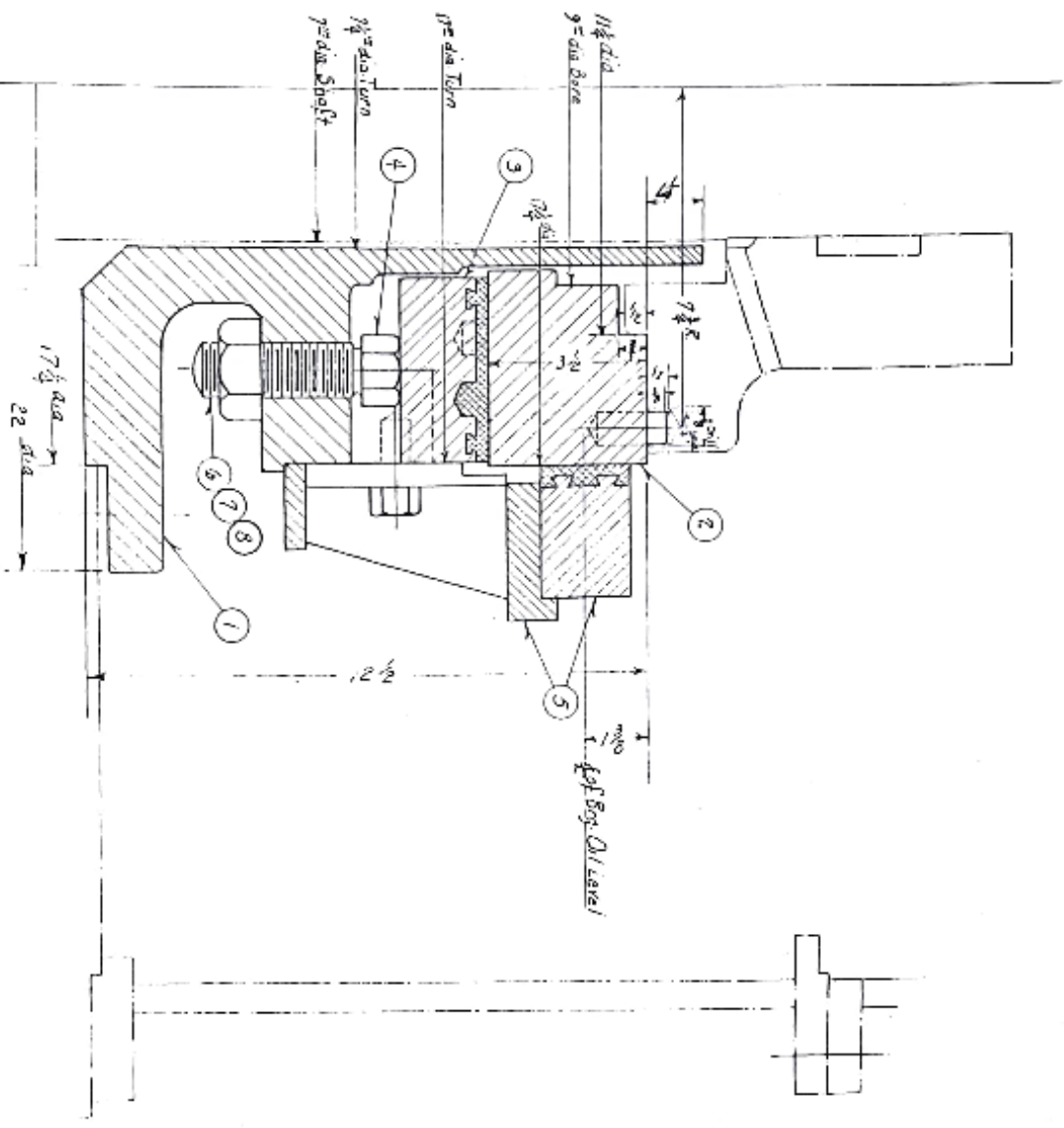
554904
 1
 2
 3
 4
 5
 6
 7
 8
 9
 10
 11
 12
 13
 14
 15
 16
 17
 18
 19
 20
 21
 22
 23
 24
 25
 26
 27
 28
 29
 30
 31
 32
 33
 34
 35
 36
 37
 38
 39
 40
 41
 42
 43
 44
 45
 46
 47
 48
 49
 50
 51
 52
 53
 54
 55
 56
 57
 58
 59
 60
 61
 62
 63
 64
 65
 66
 67
 68
 69
 70
 71
 72
 73
 74
 75
 76
 77
 78
 79
 80
 81
 82
 83
 84
 85
 86
 87
 88
 89
 90
 91
 92
 93
 94
 95
 96
 97
 98
 99
 100

Generator Upper Guide Bearing
 JPS Drawing # 554904

554904

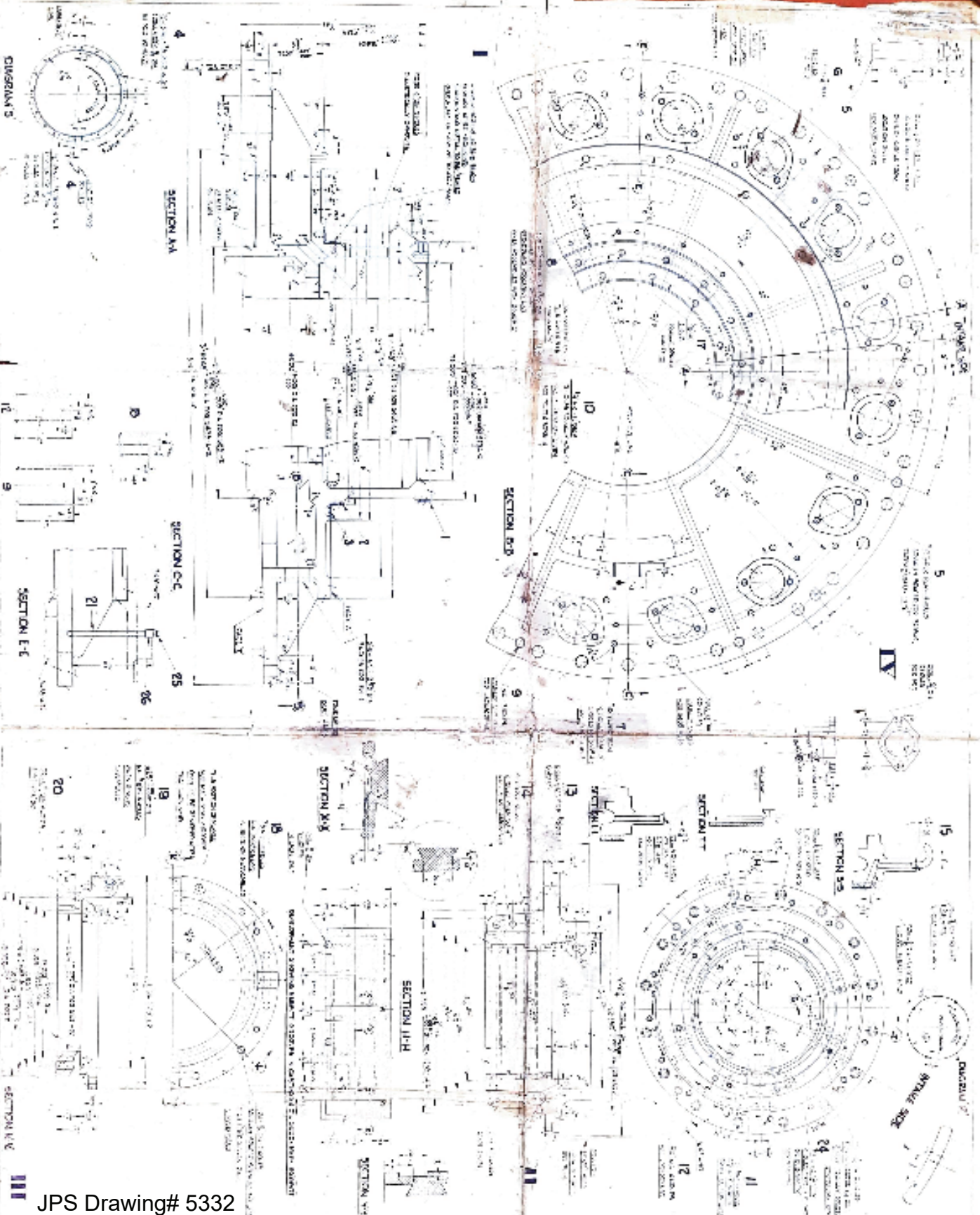
1	Base Ring	Item 4	Dwg. A.K. 440930	
2	Runner		Dwg. 1-11-186	
3	Shoe		Dwg. A.K. 140714	
4	Jack Screw		Dwg. A.K. 140713	
5	Guide Ring Support		Dwg. 578272	
6	Jack Screw Wrench 5/8" 5/8"	J.H. Williams Cat		1
7	Jack Screw Locknut			6
8	Jack Screw Lock Nut Wrench 5/8"			1
9	Runner, Domestic - 0011 Pt. 1 of 3 dia	C.R.S. #15516		3

THRUST BEARING



Thrust Bearing
JPS Drawing # 578269

578269



JPS Drawing# 5332

DOMINION ENGINEERING WORKS LTD
 HYDRAULIC DIVISION
 DETAILS OF
 HEAD COVER
 MAIN SHAFT BEARING
 SEAL RING ETC.

BILL OF MATERIALS			
NO.	DESCRIPTION	QTY	REMARKS
1	HEAD COVER	1	
2	MAIN SHAFT BEARING	1	
3	SEAL RING	1	
4	MAIN SHAFT	1	
5	MAIN SHAFT BEARING	1	
6	SEAL RING	1	
7	HEAD COVER	1	
8	MAIN SHAFT	1	
9	MAIN SHAFT BEARING	1	
10	SEAL RING	1	
11	HEAD COVER	1	
12	MAIN SHAFT	1	
13	MAIN SHAFT BEARING	1	
14	SEAL RING	1	
15	HEAD COVER	1	
16	MAIN SHAFT	1	
17	MAIN SHAFT BEARING	1	
18	SEAL RING	1	
19	HEAD COVER	1	
20	MAIN SHAFT	1	
21	MAIN SHAFT BEARING	1	
22	SEAL RING	1	
23	HEAD COVER	1	
24	MAIN SHAFT	1	
25	MAIN SHAFT BEARING	1	
26	SEAL RING	1	
27	HEAD COVER	1	
28	MAIN SHAFT	1	
29	MAIN SHAFT BEARING	1	
30	SEAL RING	1	

522

Turbine General Arrangement
 JPS Drawing # 5225

